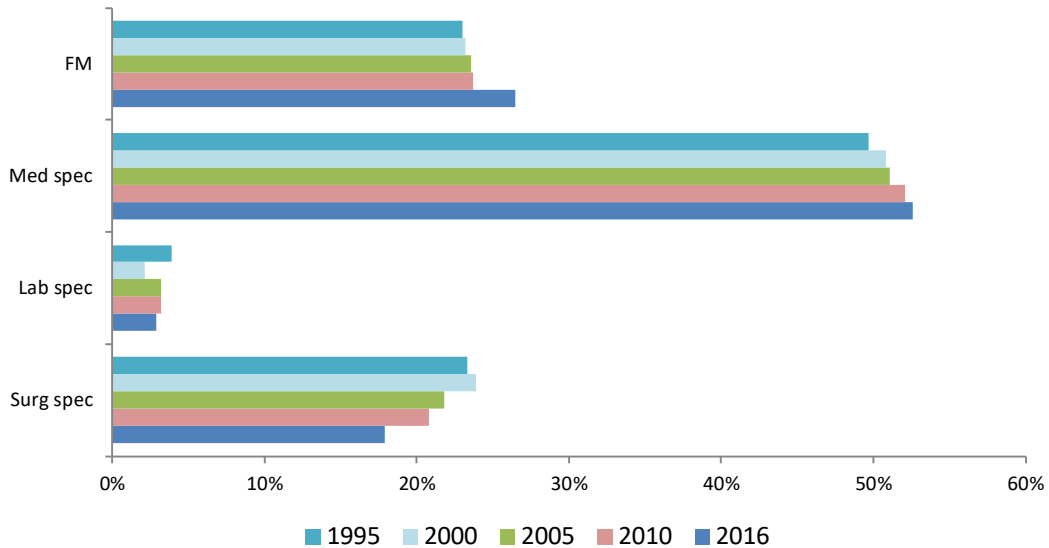


For the most part, broad specialty proportional trends in Canadian postgraduate medical education have stayed fairly constant over the years. However, the graph below shows that family medicine has gradually increased from 23% to 27% of all ministry funded postgraduate trainees over the last two decades. Medical specialists have also increased slightly to just over half (53%). Decreases occurred in surgical specialties from 23% to 18% and laboratory specialties is now around 3%.

Ministry funded postgraduate trainees by broad specialty of training



Tracking the percentage change in the number of trainees from the previous year shows a steady increase in the number of dermatology, psychiatry and family medicine trainees with positive growth rates every year since 2010. There has been negative growth for general and orthopedic surgery in recent years as well as diagnostic radiology, with the exception of 2016.

Percentage change from previous year in number of ministry funded postgraduate trainees

