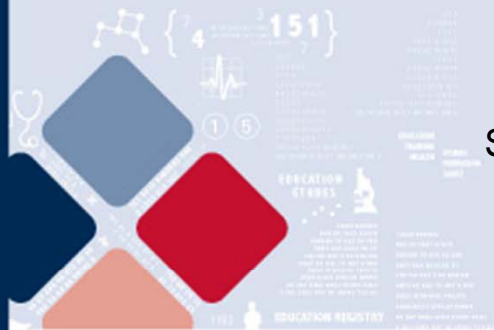


# Recent Post-M.D. Training Trends

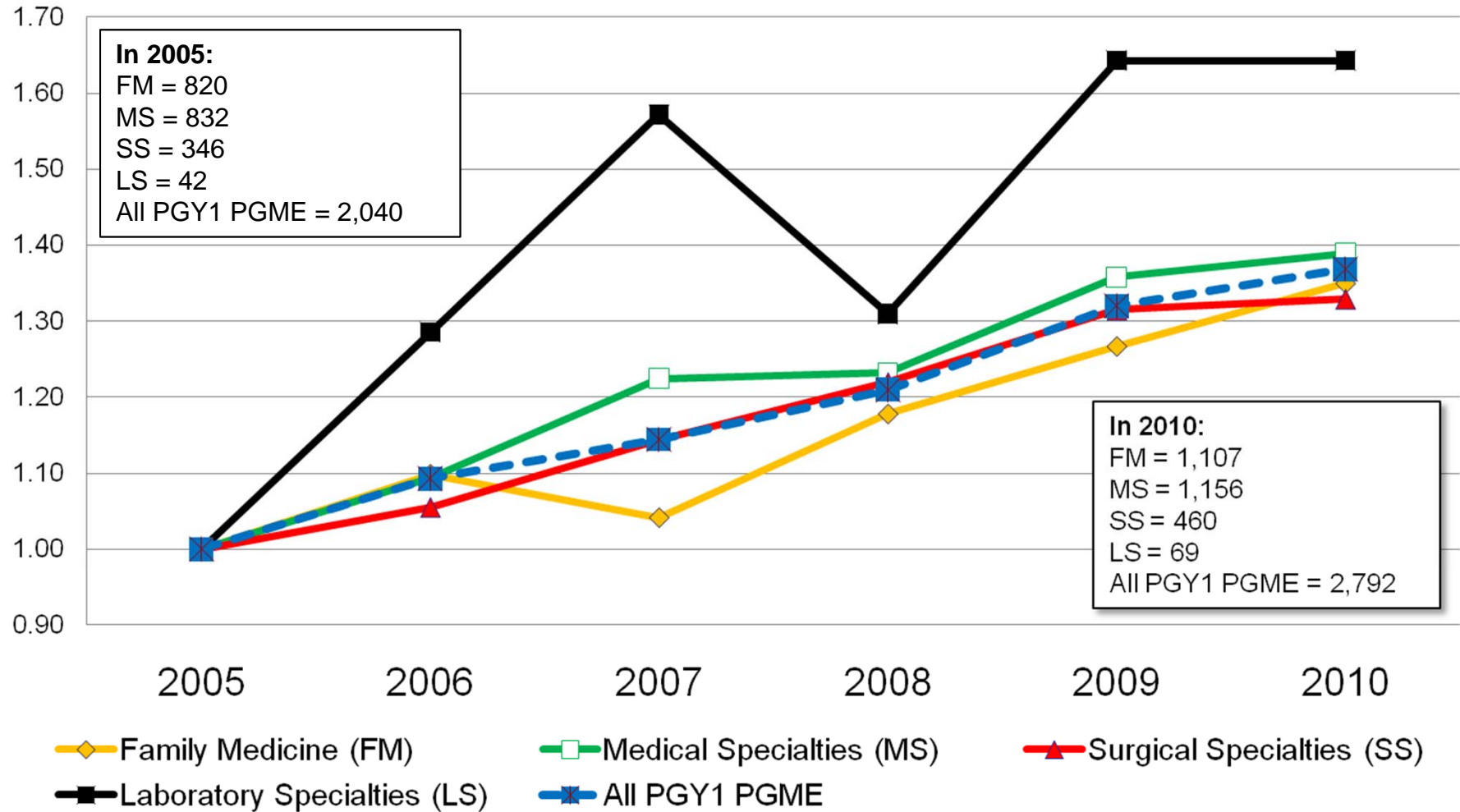
Canadian Medical Forum  
May 17, 2011 – Ottawa, ON, Canada

Dr James Rourke, Dean, Faculty of Medicine  
Memorial University of Newfoundland  
Steve Slade, VP Research and Analysis CAPER-ORIS  
Association of Faculties of Medicine of Canada





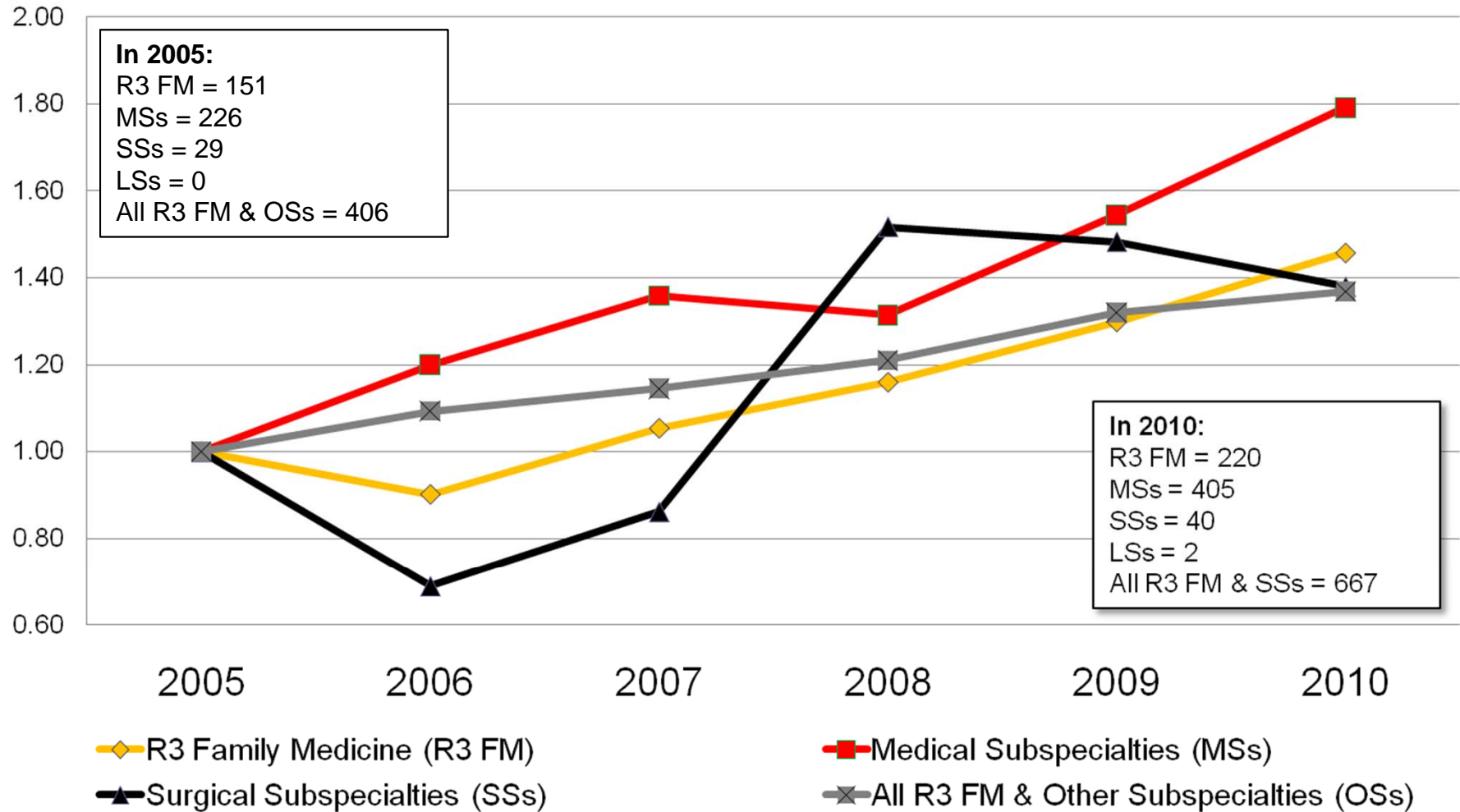
## Indexed Change in PGY1 PGME Enrolment, by Broad Specialty, Canada, 2005-06 to 2010-11



Source: CAPER, 2010. Note: Includes P/T Ministry-funded trainees only. Excludes Fellows.

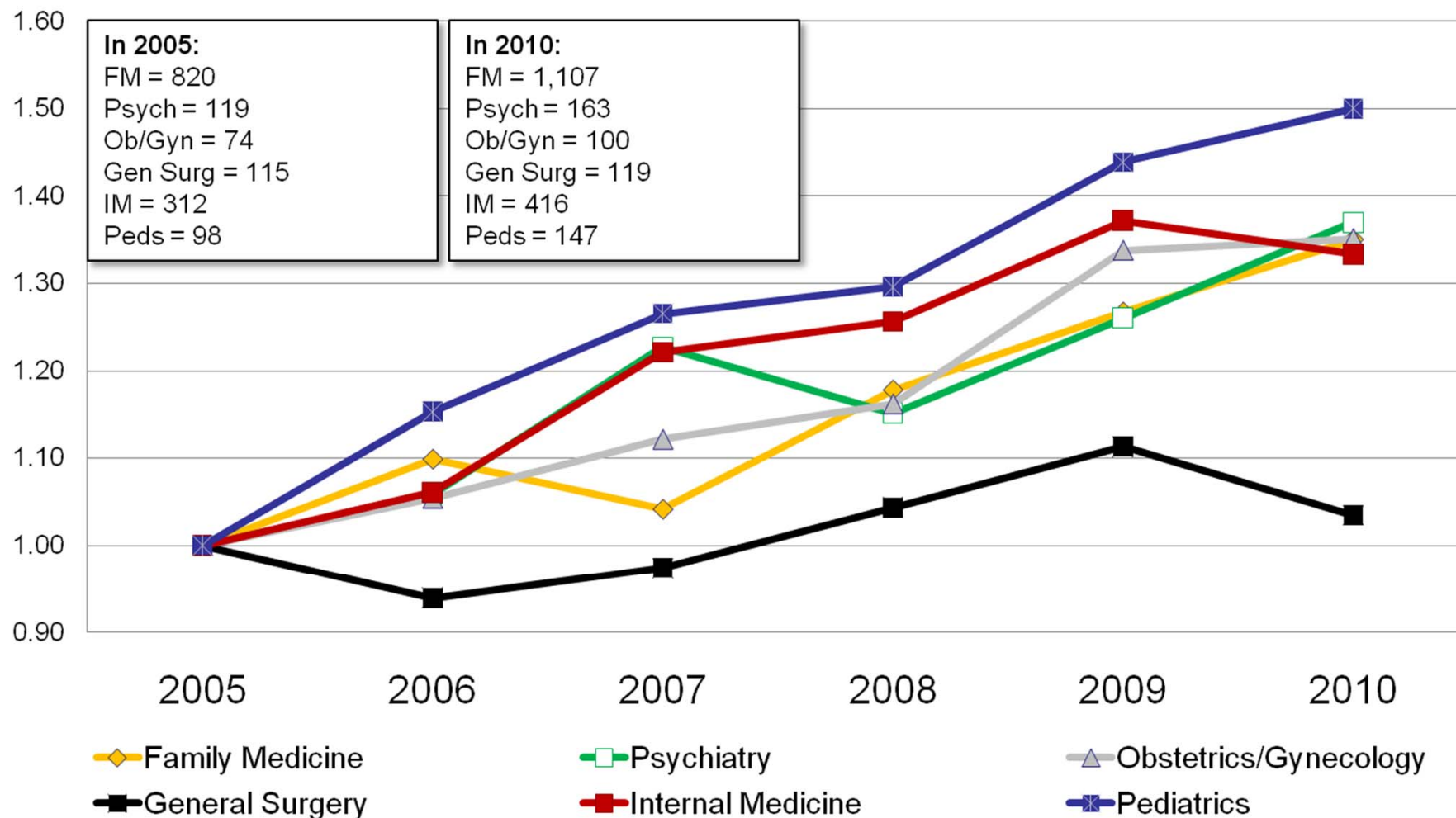


## Indexed Change in Entry Year Subspecialty PGME Enrolment, by Broad Specialty, Canada, 2005-06 to 2010-11



Source: CAPER, 2010. Note: Includes P/T Ministry-funded trainees only. Excludes Fellows.

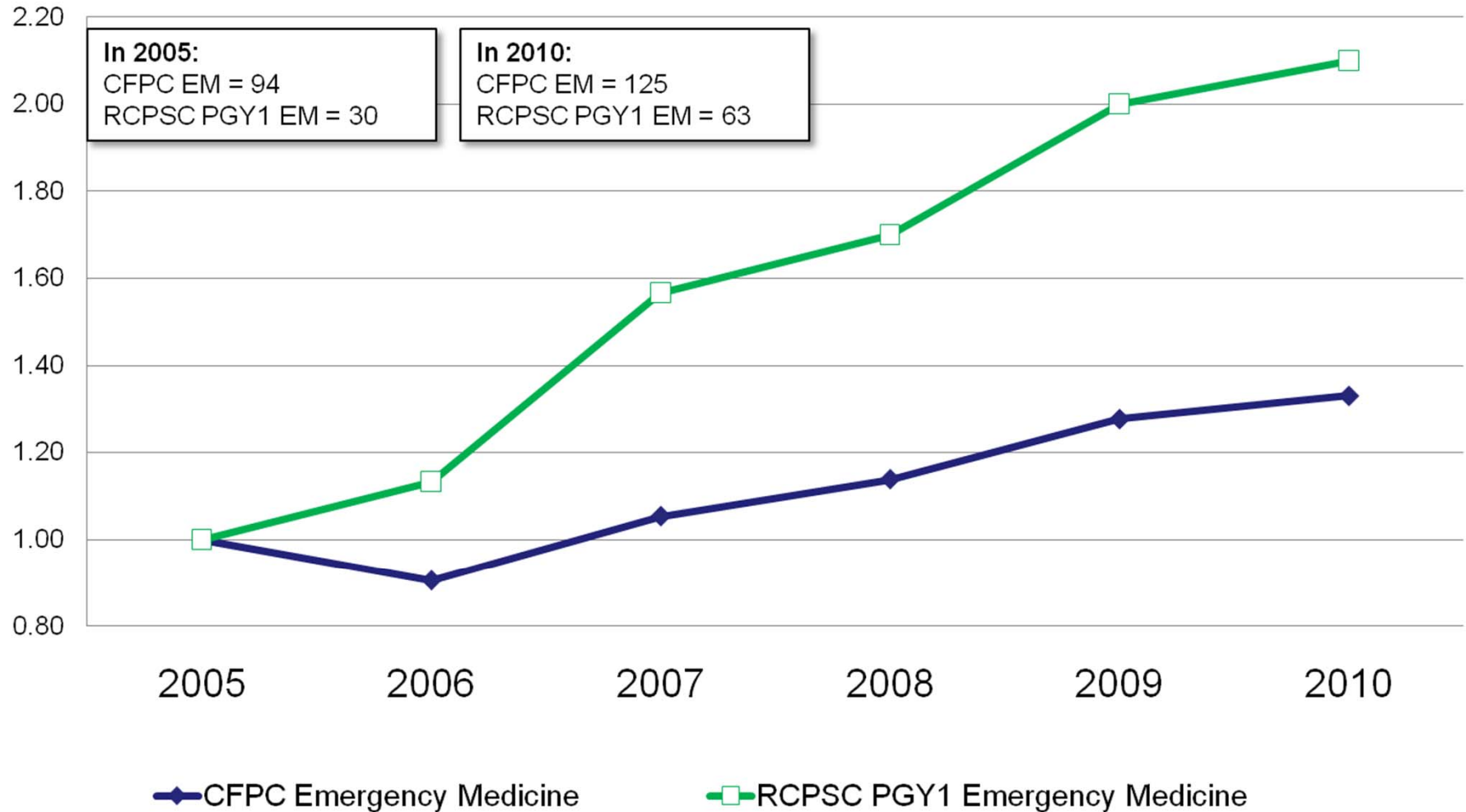
## Indexed Change in PGY1 PGME Enrolment, Selected Specialties, 2005-06 to 2010-11



Source: CAPER, 2010. Note: Includes P/T Ministry-funded trainees only. Excludes Fellows.



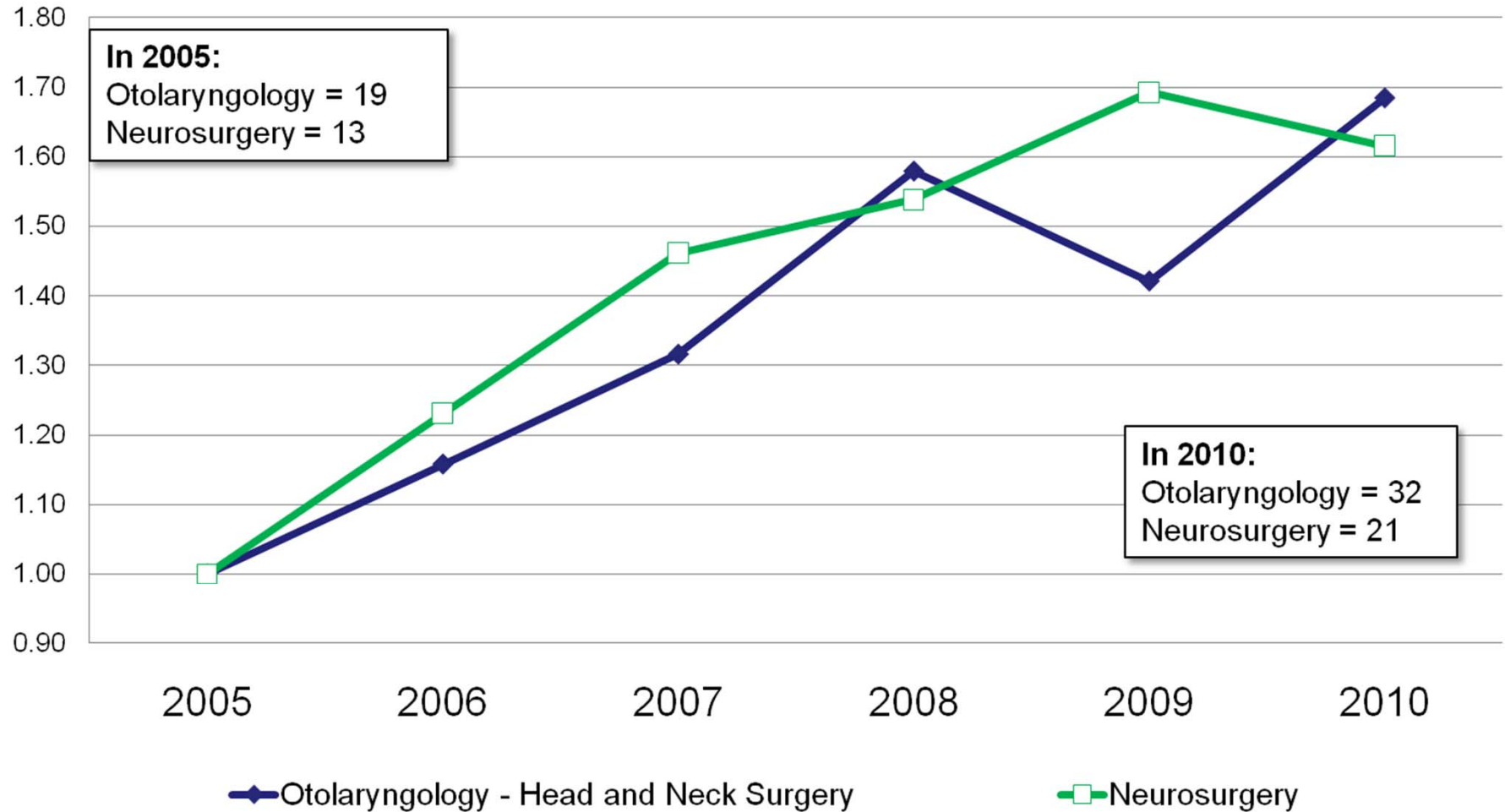
# Indexed Change in CFPC Emergency Medicine and RCPSC PGY1 Emergency Medicine, 2005-06 to 2010-11



Source: CAPER, 2010. Note: Includes P/T Ministry-funded trainees only. Excludes Fellows.

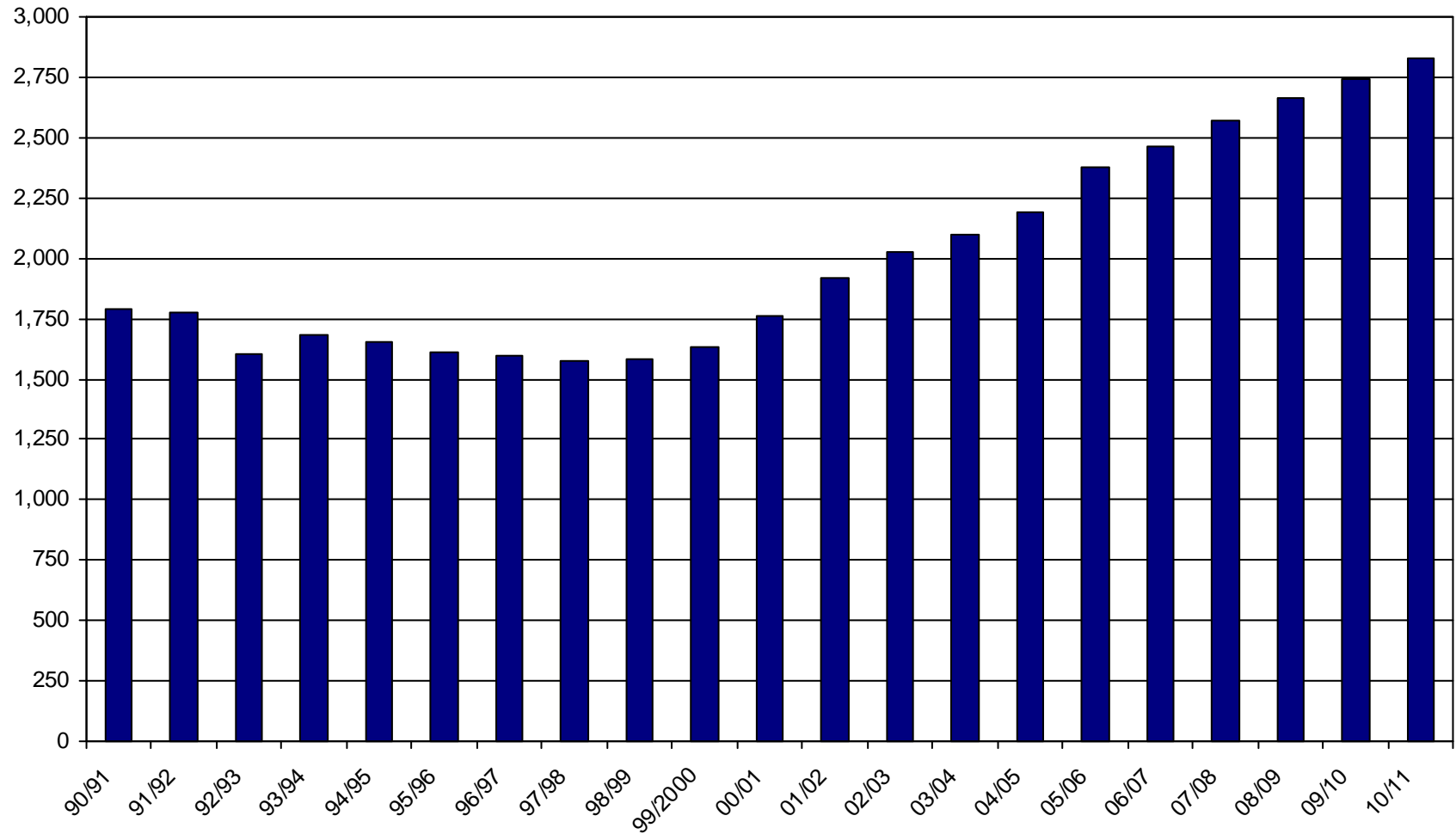


## Indexed Change in PGY1 PGME Enrolment, Otolaryngology and Neurosurgery, 2005-06 to 2010-11





# First Year MD Program Enrolment, Canada, 1990-01 to 2010-11



Source: AFMC ORIS, 2011.

Source: AFMC, ORIS, 2011.