

# You Have Questions, We Have Answers

## CAPER Data and Services

AFMC Postgraduate Deans Retreat  
Friday 6 May, 2011 – Toronto, ON, Canada

Steve Slade, VP Research and Analysis CAPER-ORIS, AFMC

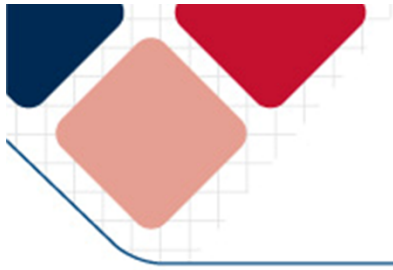




# CAPER's Beginning



- The Canadian Post-M.D. Education Registry (CAPER) was born out of discussion in the mid-1980's around the need
  - to provide accurate information regarding the size, nature and distribution of post-M.D. programs
  - to develop a common classification system of post-M.D. trainee categories
  - to assist medical schools, participating organizations and others by developing information tables regarding post-M.D. programs and trainees
  - to assist medical schools by providing information from the overall available data relative to their own trainees
  - to provide a basis for research including longitudinal studies dealing with health care issues in Canada



# CAPER Today

- CAPER's early goals & objectives are still highly relevant - PGME aligns with health needs
- Sustained partnership between FoM, medical orgs, F/P/T government
- IMG Project built on partnership
- Expanded reporting – specialty & prov reports, IMG report, custom requests, web dissemination



## CAPER's Core Data



- CAPER #ID
- Age, sex, legal status
- School/Year of MD graduation
- PGME training faculty
- Field of training (CaRMS R1 program)
- Rank level (R1, R2...Fellow)
- Source of funding
- Clinical investigator
- Ongoing practice location (2yr, 5yr, 10yr, etc.)

- Home
- About CAPER
- CAPER Publications
- IMG Database
- Data Tables
- Papers & Presentations
- Links

Home

Members' Access

FR

Print

Access full reports (pdf)  
Access data tables (html)

The Canadian Post-M.D. Education Registry (CAPER) is the central repository for statistical information on postgraduate medical education in Canada. CAPER maintains individual-level data for all postgraduate medical residents and fellows. Data is gathered on an annual basis from all 17 Canadian Faculties of Medicine. CAPER records capture data throughout postgraduate medical training as well as ongoing practice location following post-M.D. training.

The [Annual Census of Post-M.D. Trainees](#) is CAPER's flagship report. It gives a detailed statistical profile of post-M.D. trainees in Canada, including:

- The numbers and types of physicians being trained in family medicine, surgical, laboratory and other medical specialties;
- The number of residents and fellows exiting post-M.D. training programs;
- Ongoing practice location of postgraduate trainees following training.

CAPER publications and services are designed for statistical and research purposes. Data collection is carried out according to strict [privacy policies](#) and CAPER promotes [best practices](#) with its data sharing partners.

Established in 1986, CAPER is a partnership of professional medical organizations and federal/provincial/territorial governments. CAPER's work is made possible through the financial support of its contributing members. We would like to acknowledge and thank our [contributing partners](#) for their support of the Canadian Post-M.D. Education Registry.





## Example Questions

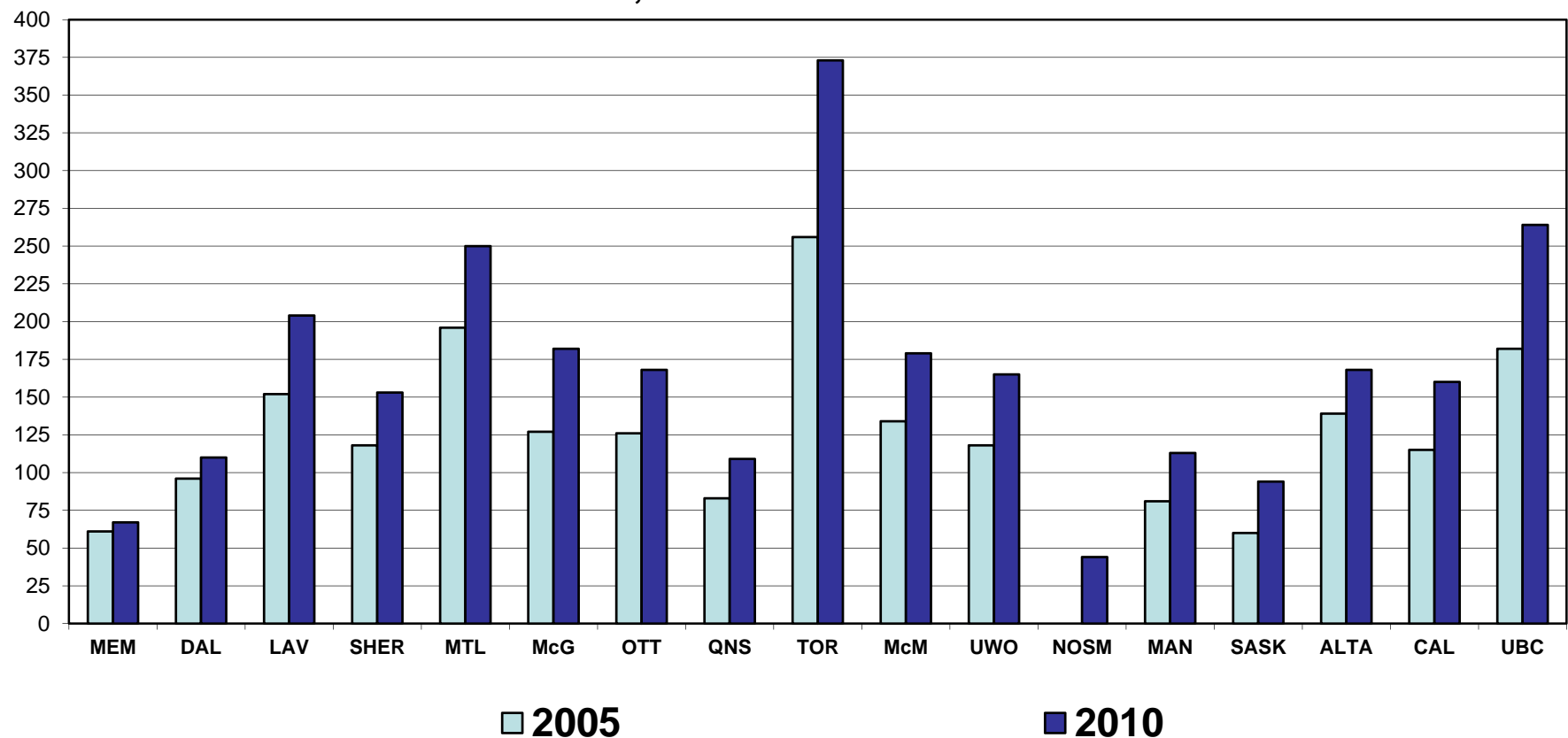
- How does growth at my faculty compare with other faculties?
- Where do our MD grads go for PGME?
- What health care needs are we meeting through our specialty allocation?
- Is it taking longer for trainees to complete their programs?
- How many physicians will come out of our medical education system in the future?
- Where do our grads set up practice?



# How does growth at my faculty compare with other faculties?



**First Year Post-MD Enrolment by Faculty of Medicine,  
Canada, 2005-06 and 2010-11**

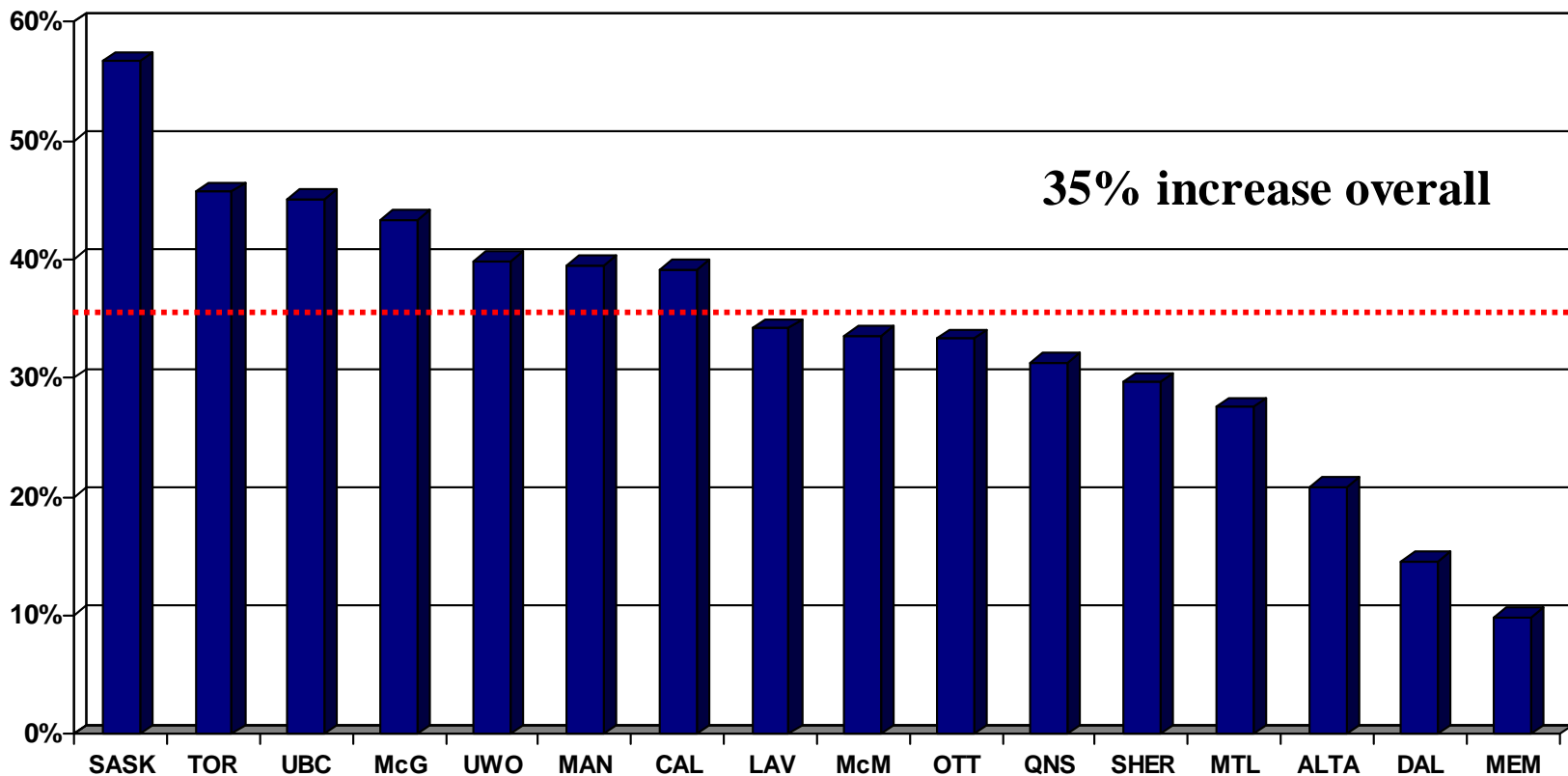


Source: CAPER, 2011. Note: Ministry-funded trainees only.



# How does growth at my faculty compare with other faculties?

Percent Increase in First Year Post-MD Enrolment by Faculty of Medicine,  
Canada, 2005-06 to 2010-11



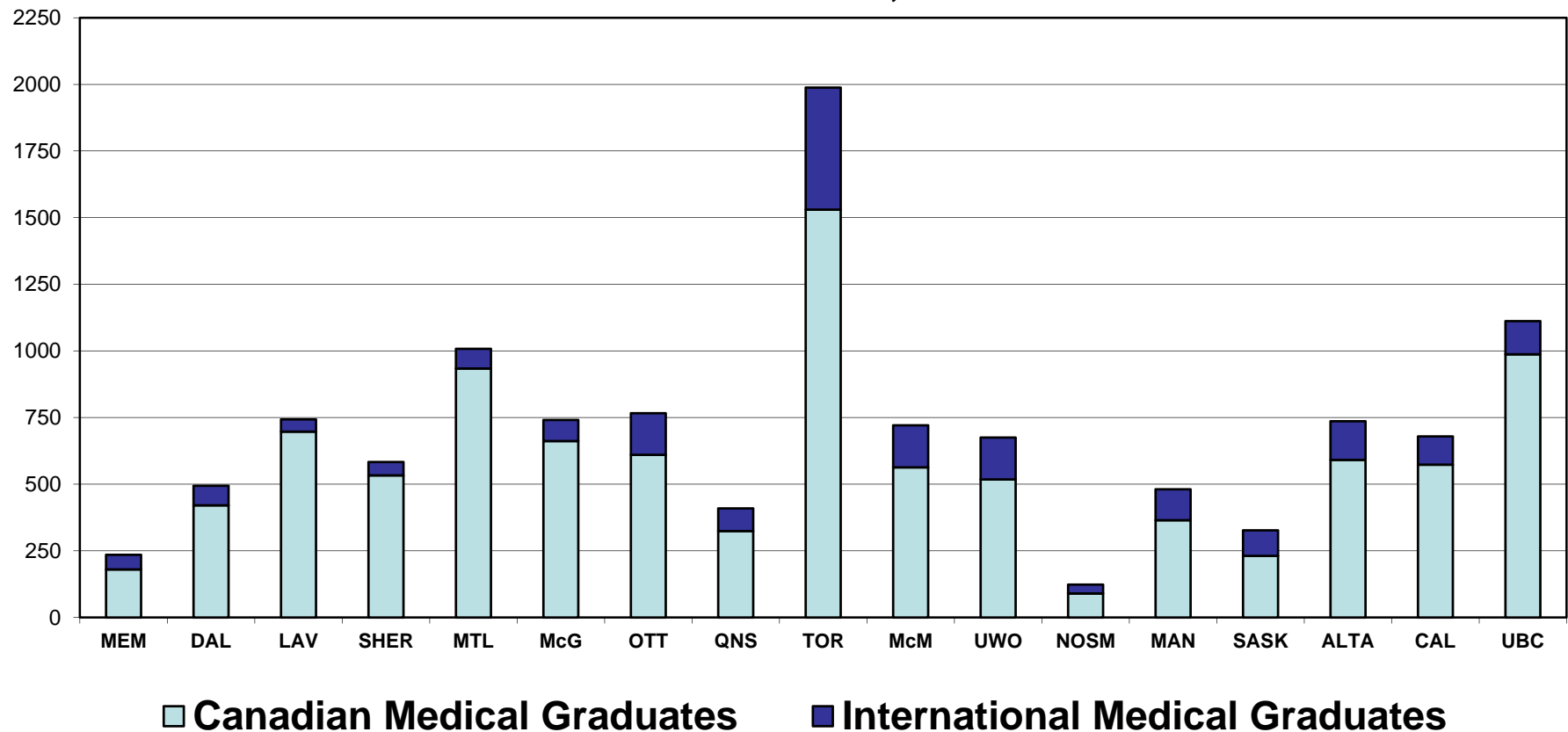
Source: CAPER, 2010. Note: Ministry-funded trainees only.





# How does growth at my faculty compare with other faculties?

**Post-MD Enrolment by Faculty of Medicine and Place of MD Graduation, Canada, 2010-11**

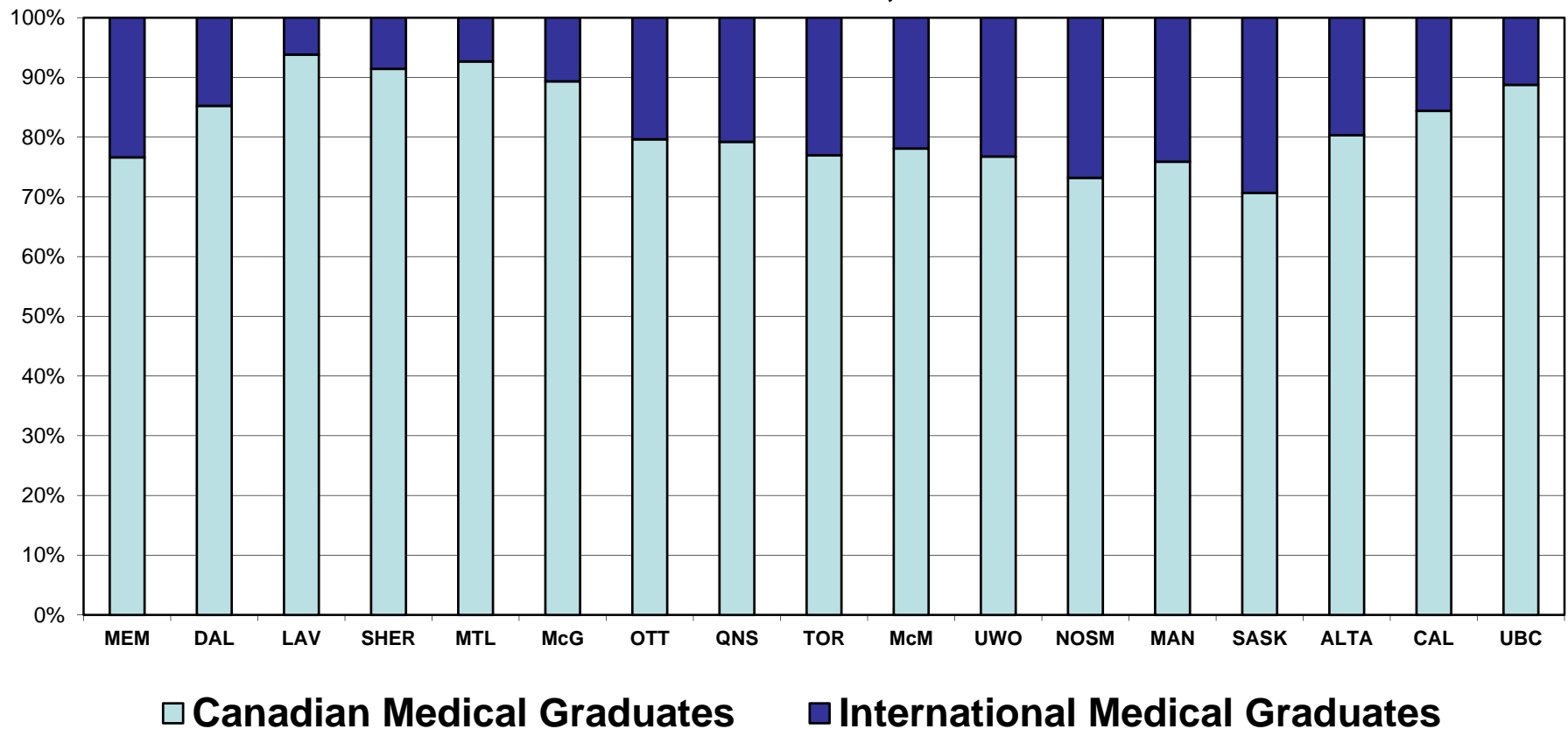


Source: CAPER, 2011. Note: Canadian citizens / Permanent residents only.



# How does growth at my faculty compare with other faculties?

**Post-MD Enrolment by Faculty of Medicine and Place of MD Graduation, Canada, 2010-11**

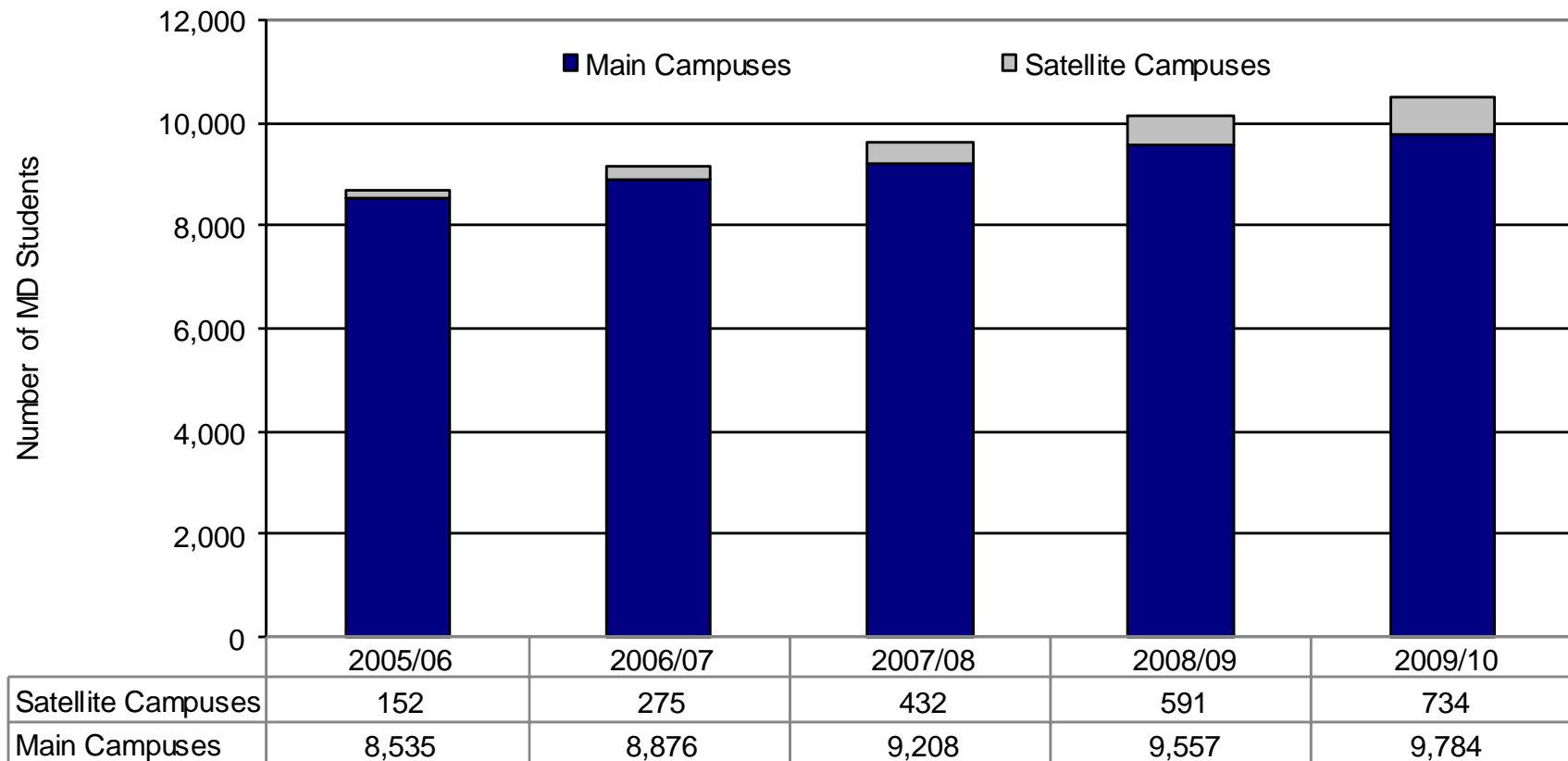


Source: CAPER, 2011. Note: Canadian citizens / Permanent residents only.



# How does growth at my faculty compare with other faculties?

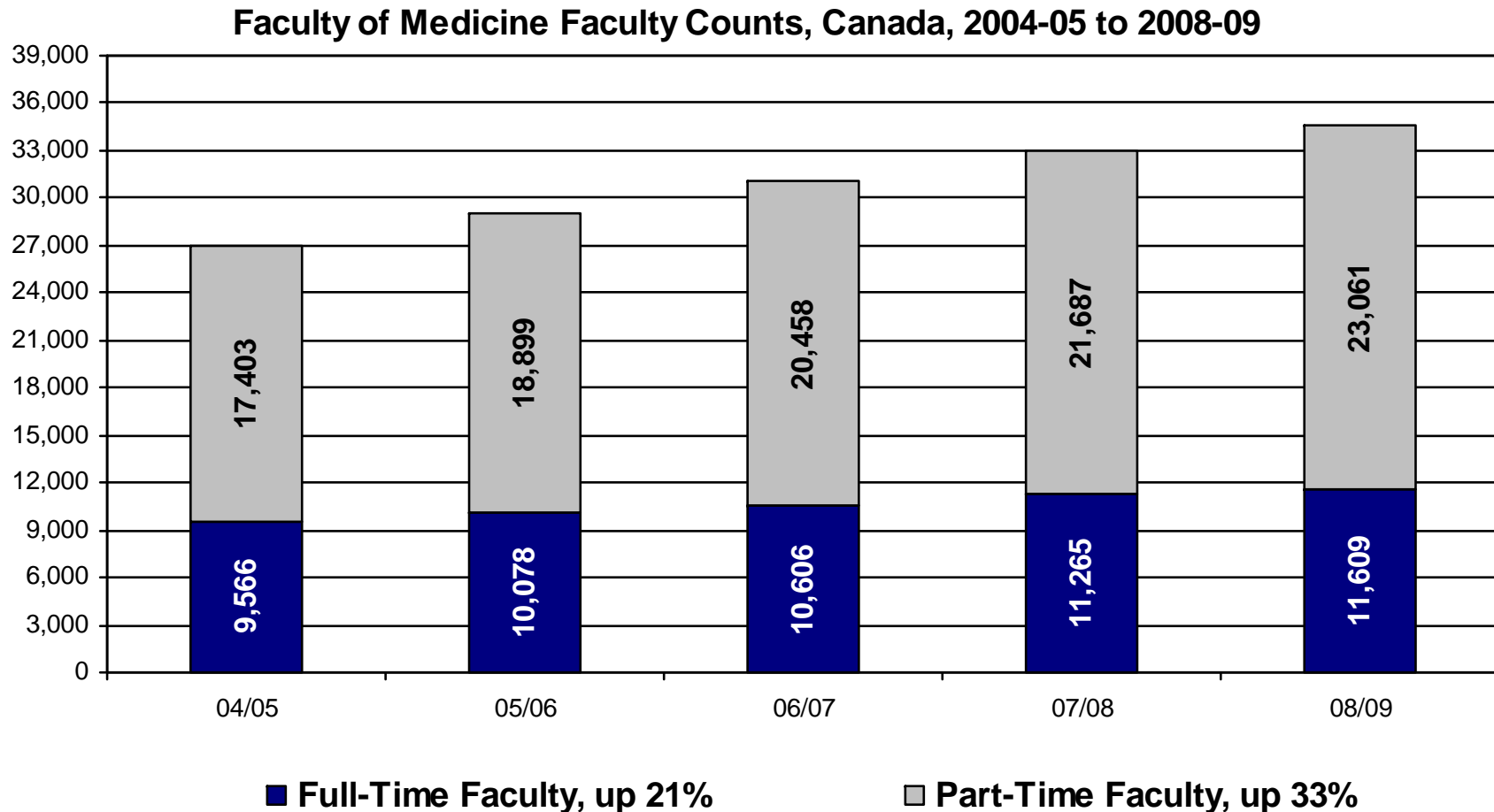
MD Program Enrolment by Site, Canada, 2005/06 - 2009/10



Source: ORIS, AFMC, 2010.



# How does growth at my faculty compare with other faculties?



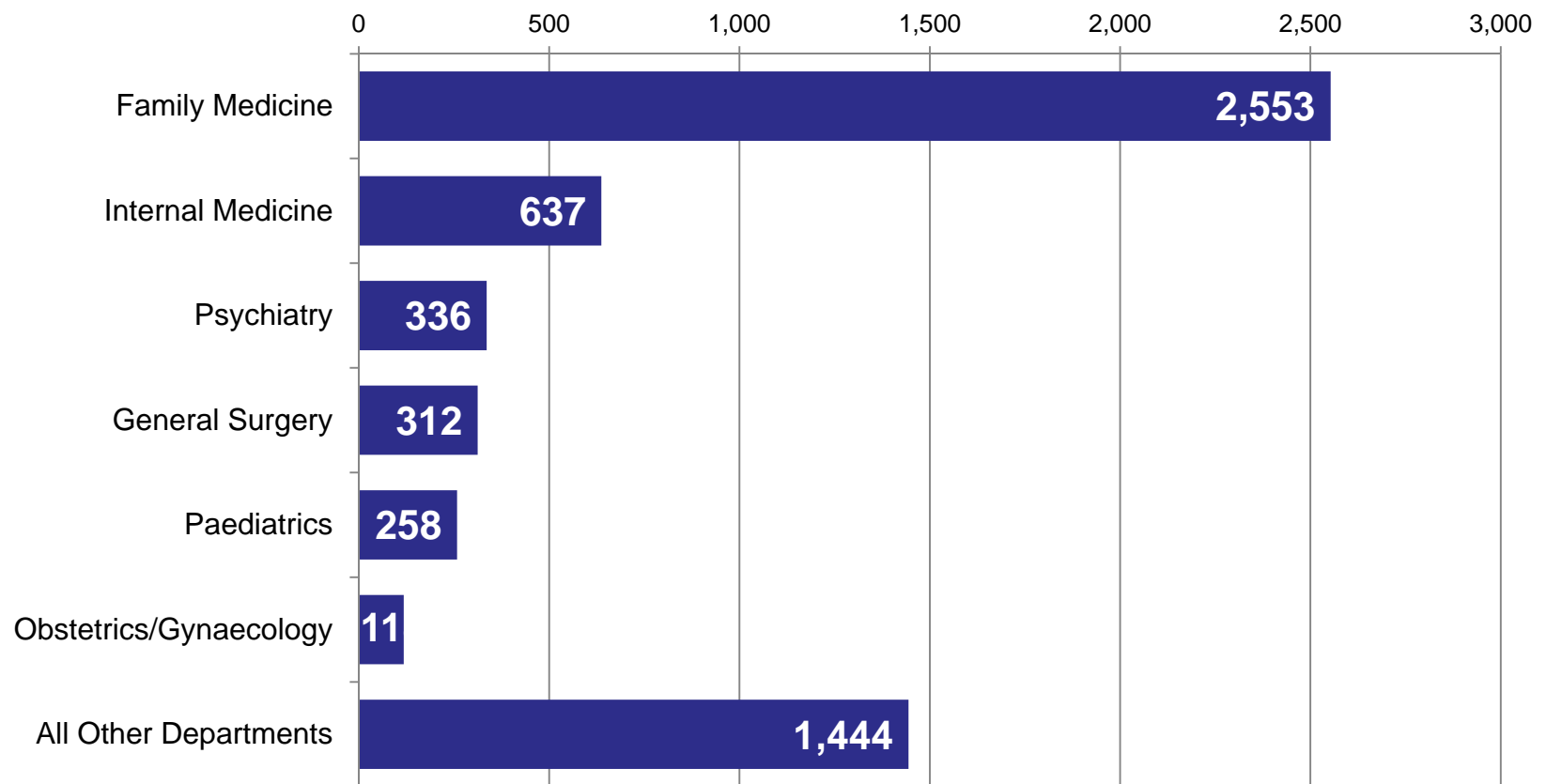
Source: AFMC ORIS, 2010.

Note: Full-time faculty include professors, associate and assistant professors, instructors and other faculty. Part-time faculty includes paid and volunteer faculty members.



# How does growth at my faculty compare with other faculties?

**Growth in the Number of Part-Time Faculty of Medicine Faculty Members,  
Canada, 2004/05 to 2008/09**



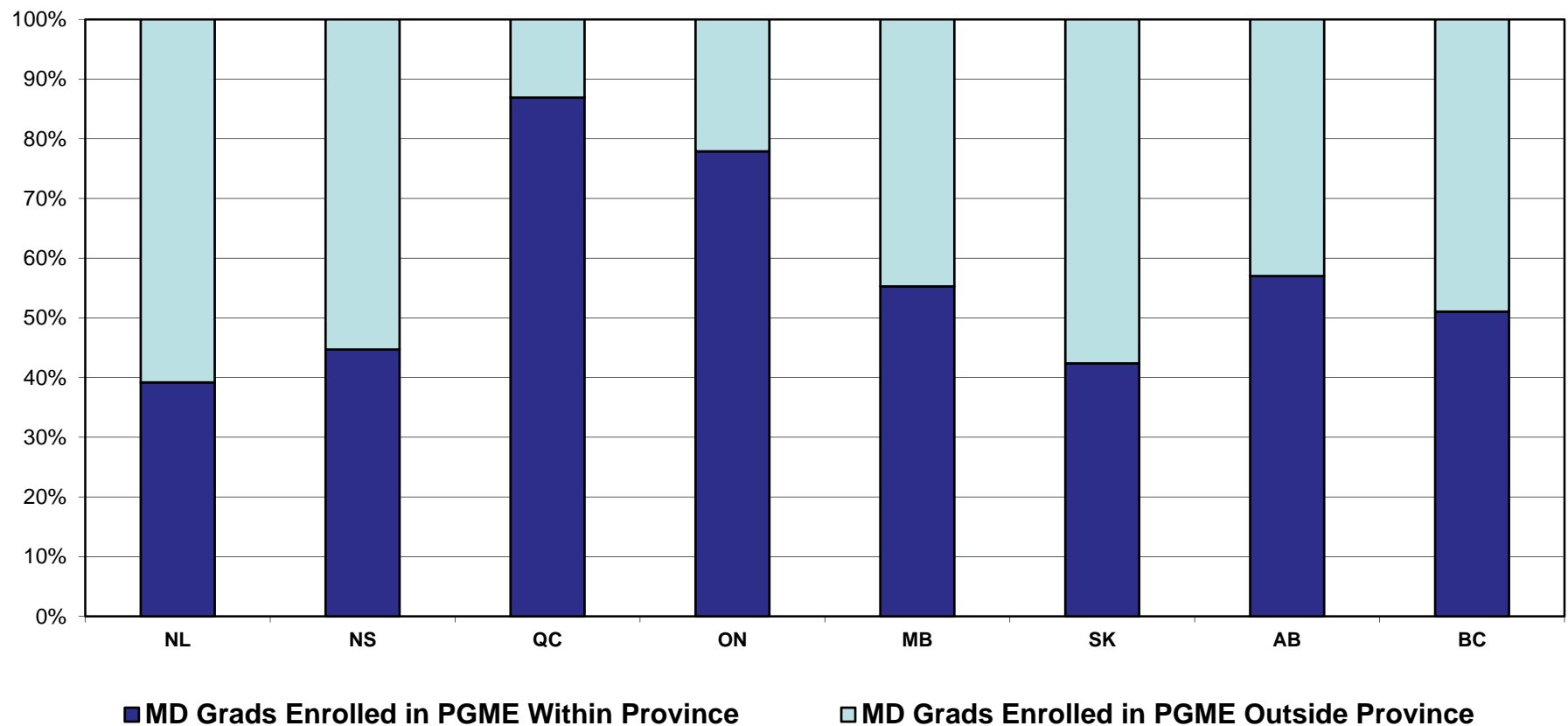
Source: AFMC, ORIS, 2011.

Note: Part-Time faculty includes paid and volunteer faculty members.



# Where do our MD grads go for PGME?

**Province of Post-MD Training by Province of MD Graduation, Canada, 2010-11**

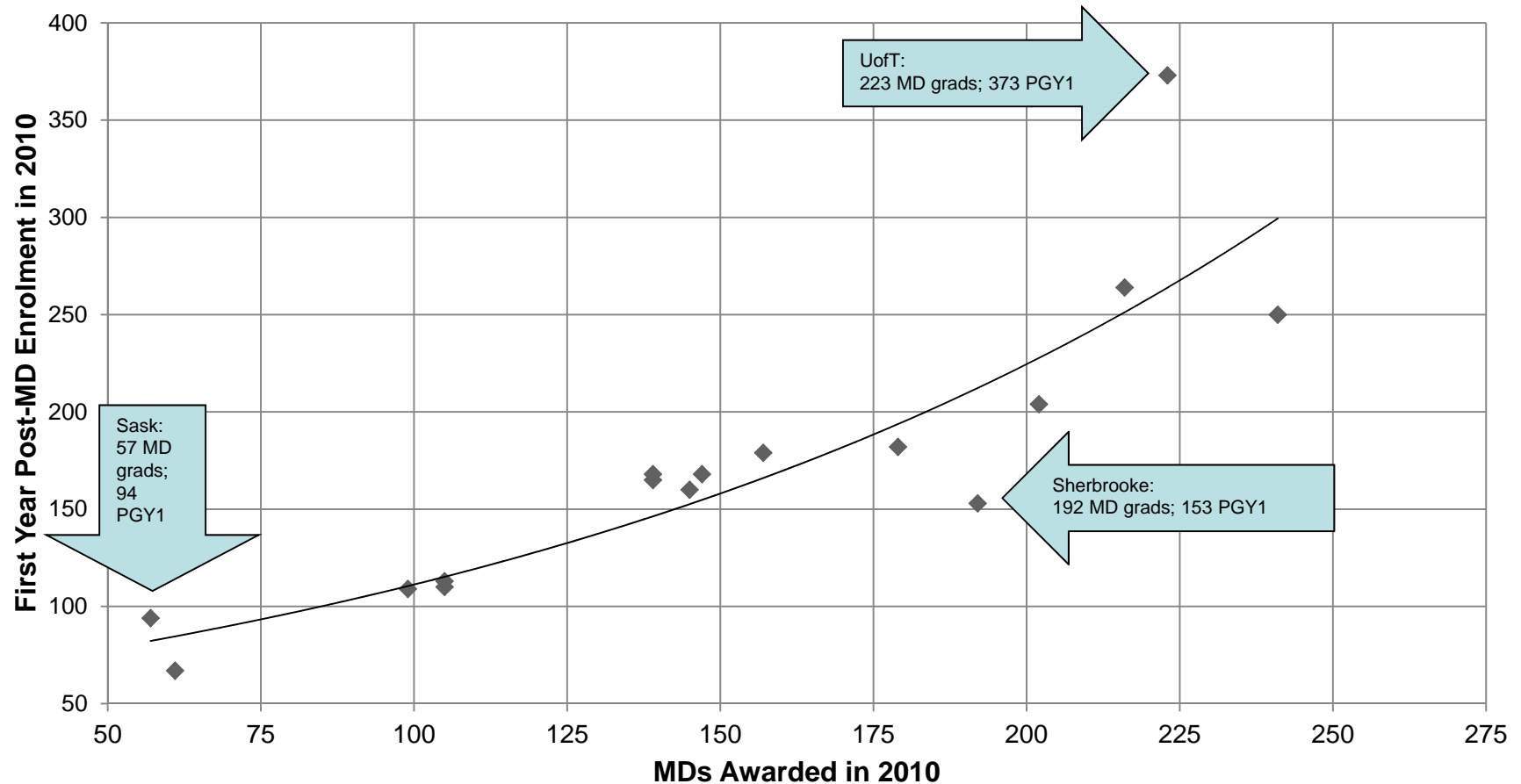


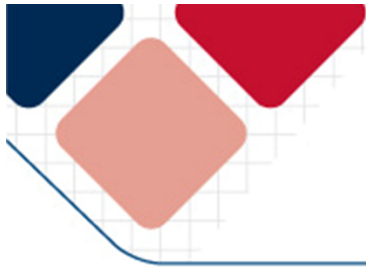
Source: CAPER, 2011. Note: Canadian citizens / Permanent residents only.



# Where do our MD grads go for PGME?

**MDs Awarded and First Year Post-MD Enrolment,  
17 Canadian Faculties of Medicine, 2010**





What health care needs are we meeting through our specialty allocation?

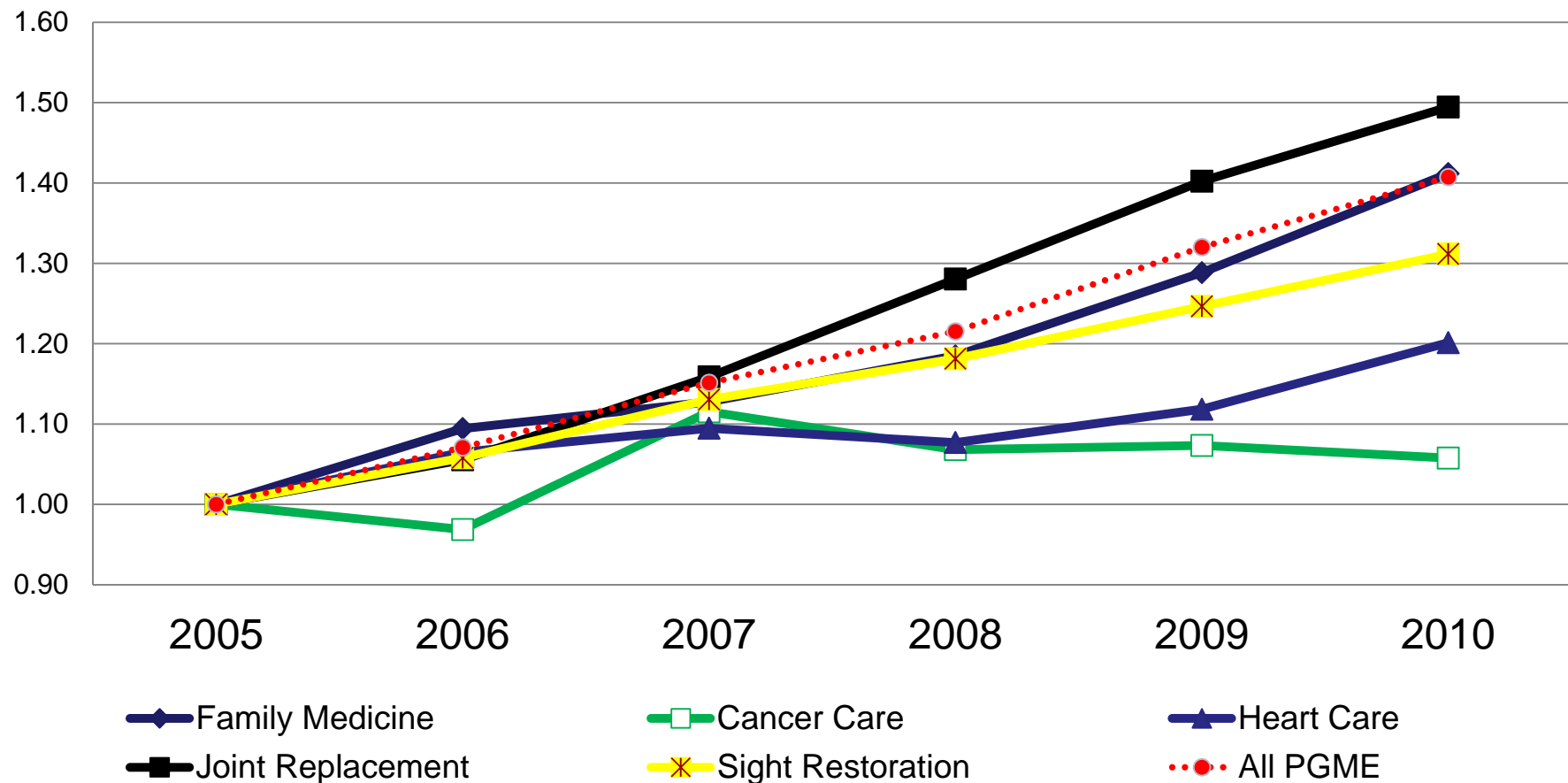
PGME training fields relate to stated health care priority areas. For example:

- **Family Doctors** (Family Medicine)
- **Cancer Care** (Radiation Oncology, Medical Oncology, Surgical Oncology, Gynecological Oncology)
- **Heart Care** (Cardiology, Cardiac Surgery)
- **Joint Replacement** (Orthopedic Surgery)
- **Sight Restoration** (Ophthalmology)



# What health care needs are we meeting through our specialty allocation?

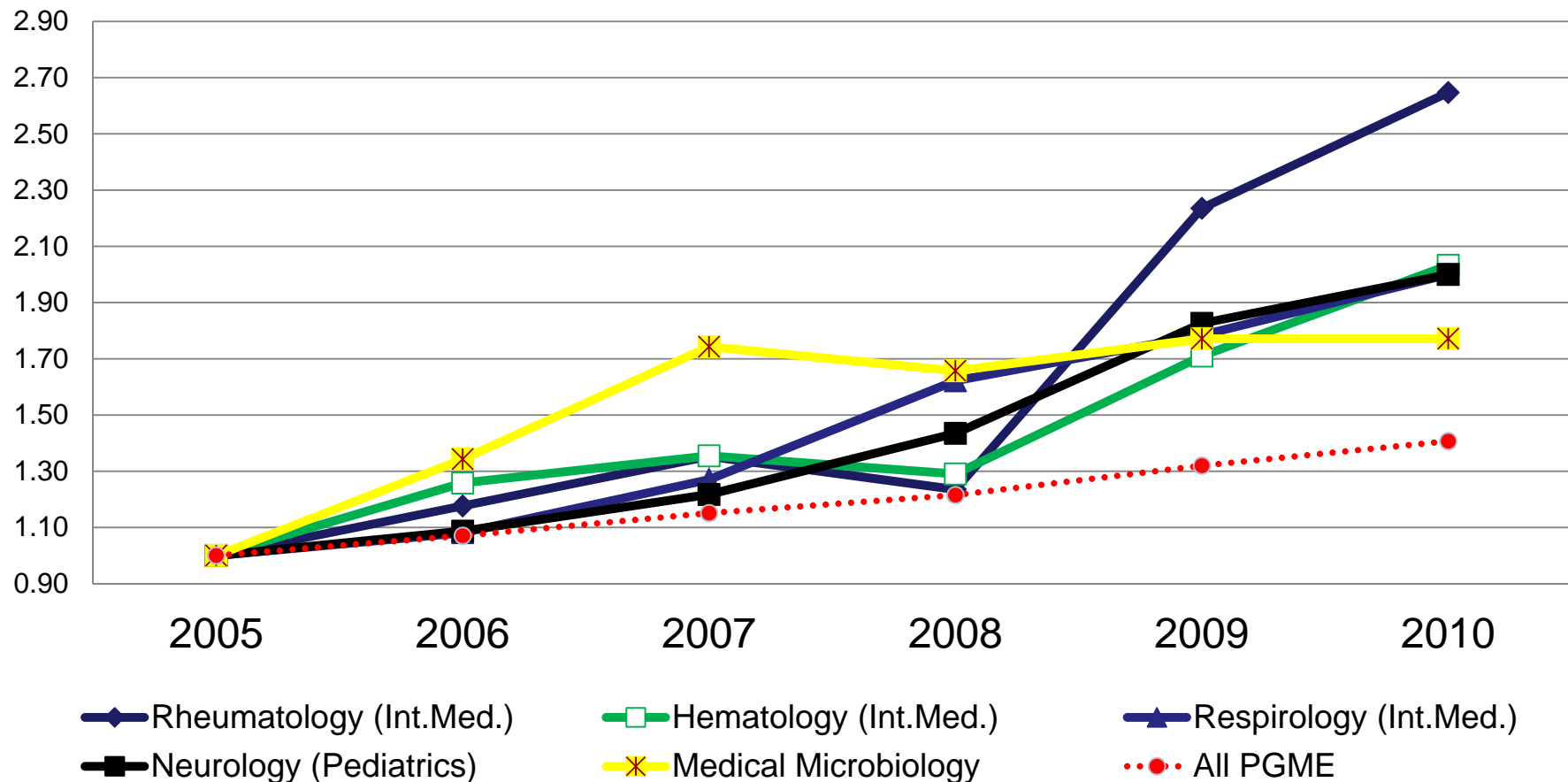
**Indexed PGME Enrolment in Health Care Priority Areas,  
Canada, 2005-06 to 2010-11**



Source: CAPER, 2010. Note: Includes P/T Ministry-funded trainees only.

# What health care needs are we meeting through our specialty allocation?

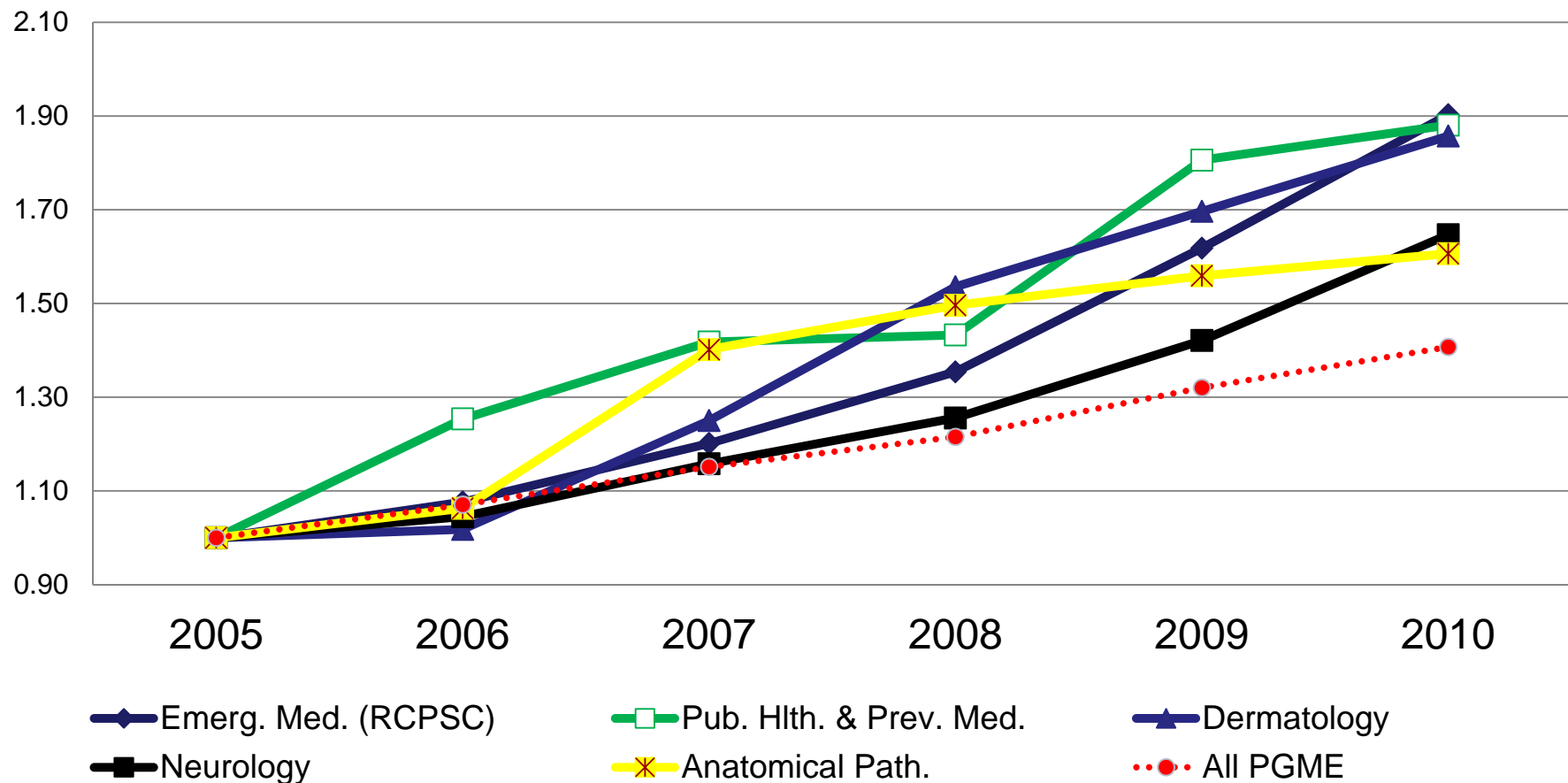
**Indexed PGME Enrolment in Selected High Growth Disciplines,  
Canada, 2005-06 to 2010-11**



Source: CAPER, 2010. Note: Includes P/T Ministry-funded trainees only.

# What health care needs are we meeting through our specialty allocation?

**Indexed PGME Enrolment in Selected High Growth Disciplines,  
Canada, 2005-06 to 2010-11**

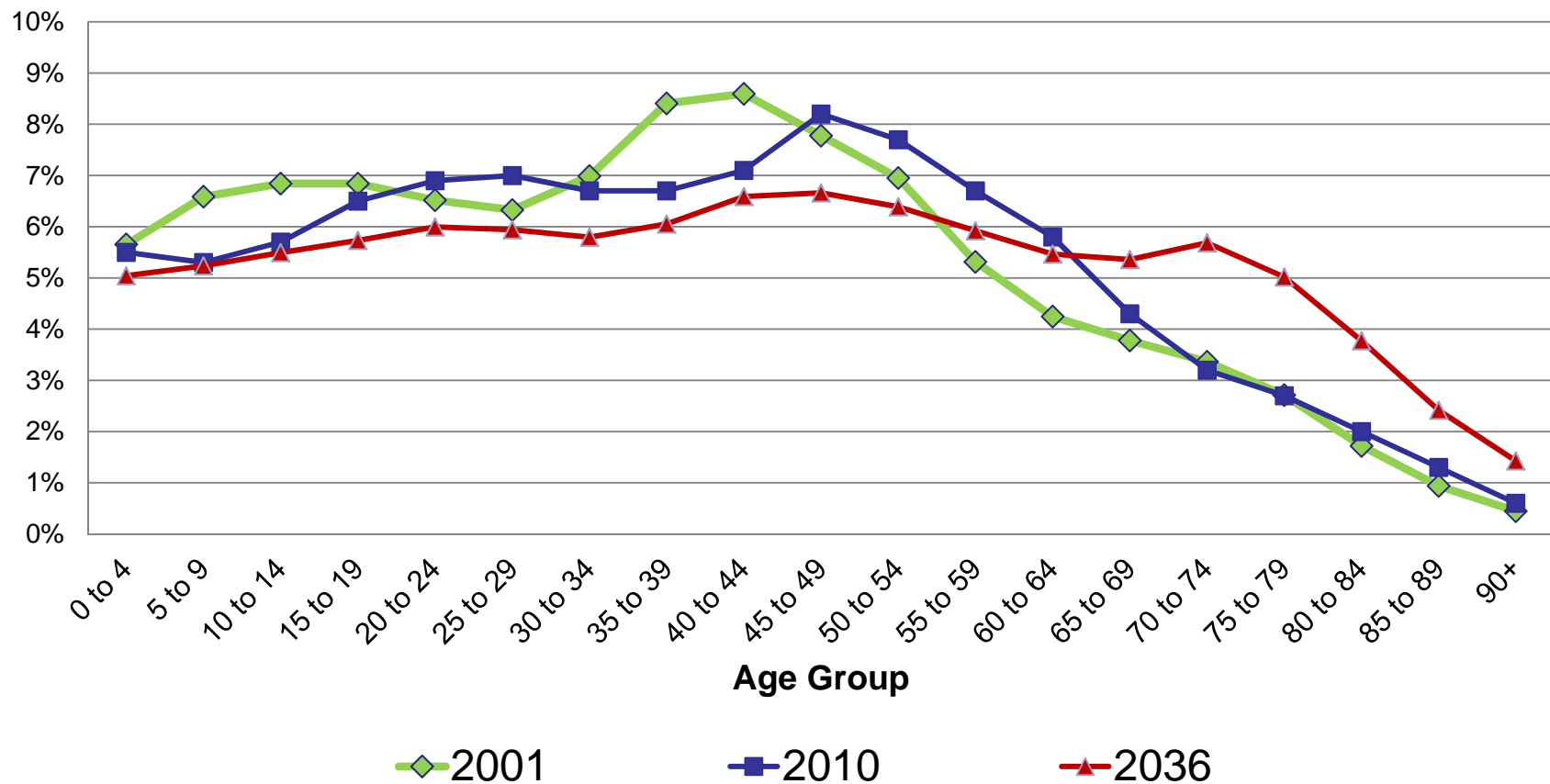


Source: CAPER, 2010. Note: Includes P/T Ministry-funded trainees only.



# What health care needs are we meeting through our specialty allocation?

**Estimated Population Distribution, Canada, 2001, 2010 and 2036**

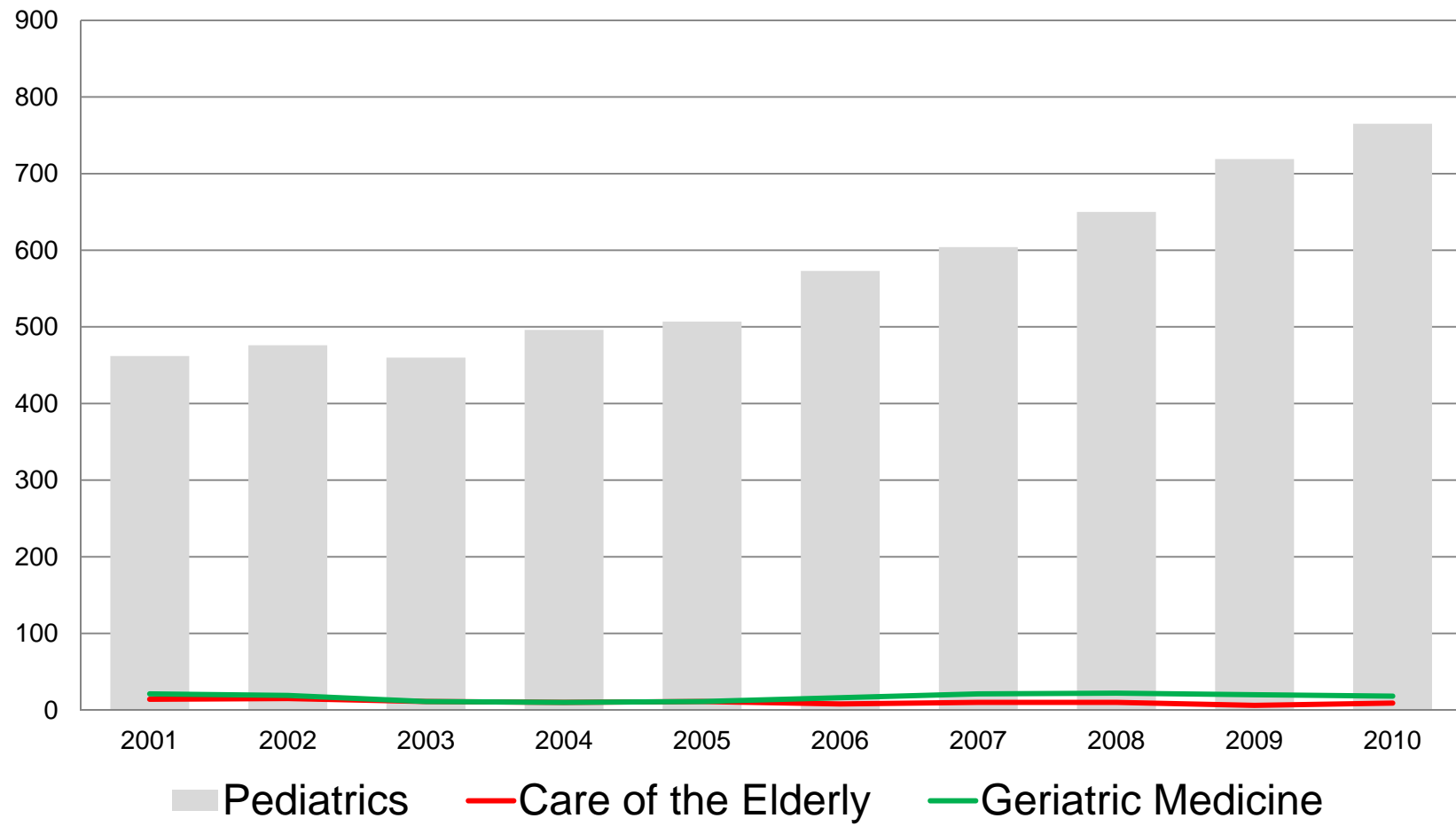


Source: Statistics Canada.



# What health care needs are we meeting through our specialty allocation?

**PGME Enrolment in Pediatrics, Care of the Elderly and Geriatric Medicine, Canada, 2001-2010**



Source: CAPER, 2011. Note: Canadian citizens / Permanent residents only.

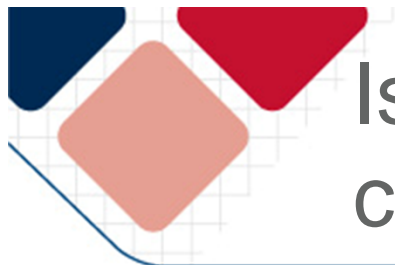


# Is it taking longer for trainees to complete their programs?



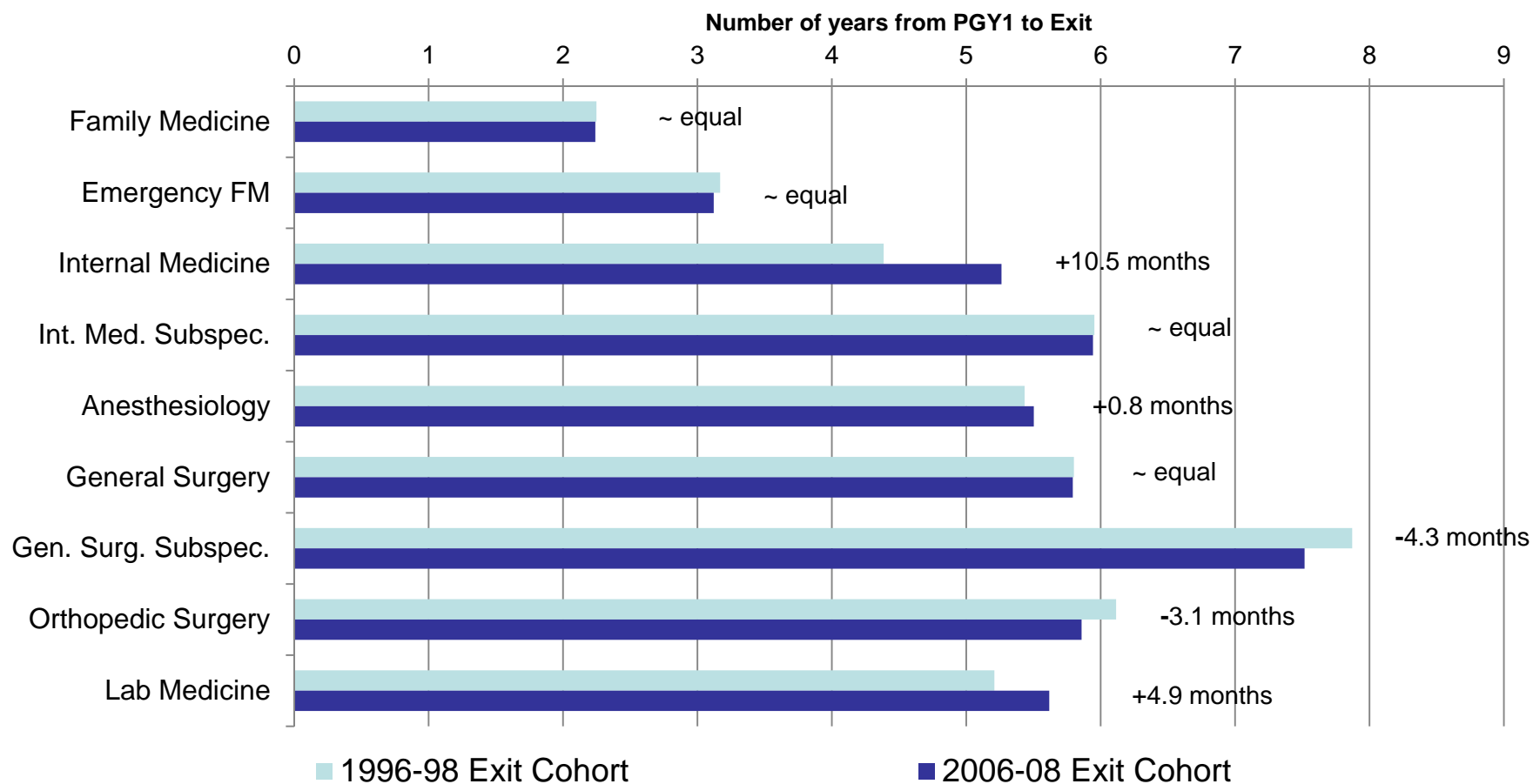
**Number of Years From PGY1 to Exit, Canada, 1996-1998 and 2006-2008 Exit Cohorts**





# Is it taking longer for trainees to complete their programs?

**Number of Years From PGY1 to Exit, Selected PGME Programs, Canada, 1996-1998 and 2006-2008 Exit Cohorts**

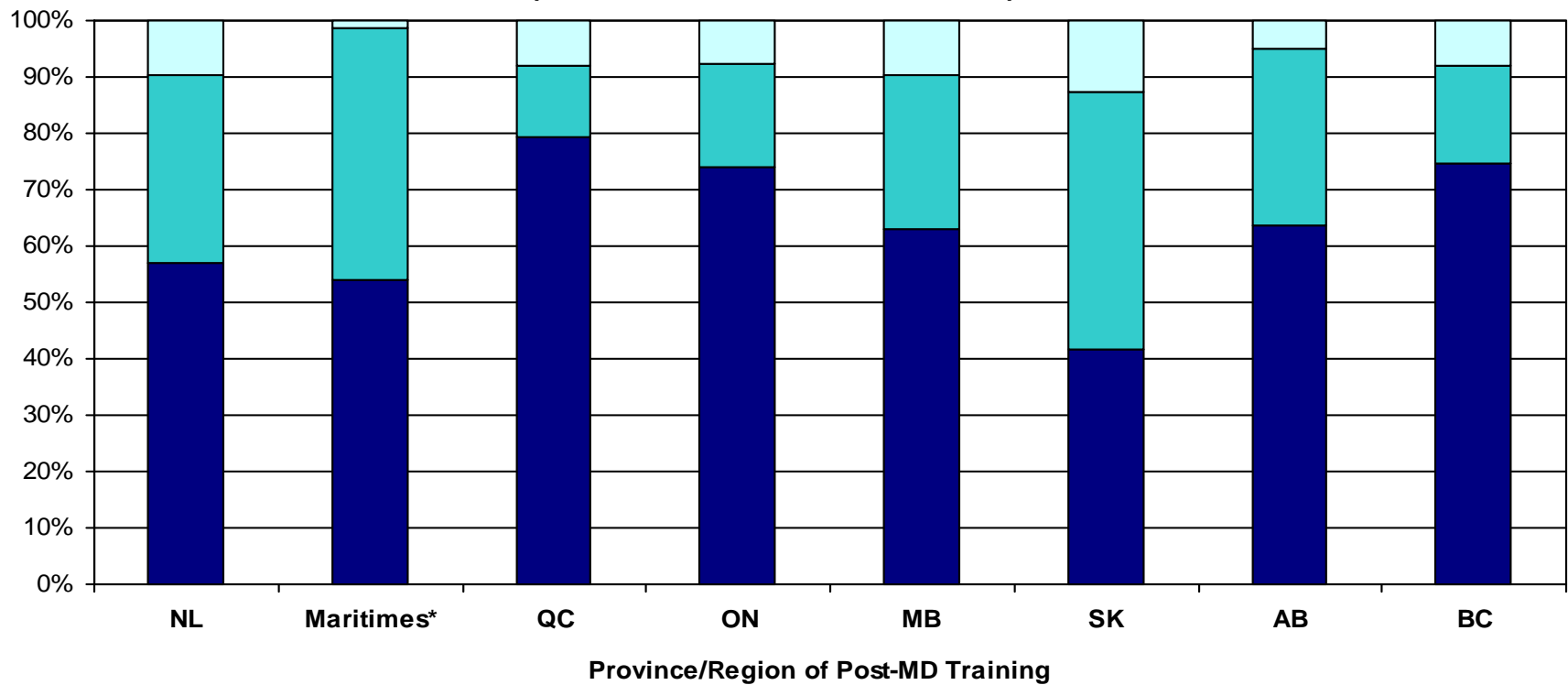


Source: CAPER, 2011. Note: Canadian citizens / Permanent residents only.



# Where do our grads set up practice?

**2009 Practice Location of Post-MD Trainees Who Exited Training in 2004  
(Practice Location 5 Years Later)**



■ Within Prov/Region of Post-MD Exit

■ Inside Canada, Outside Prov/Region of Post-MD Exit

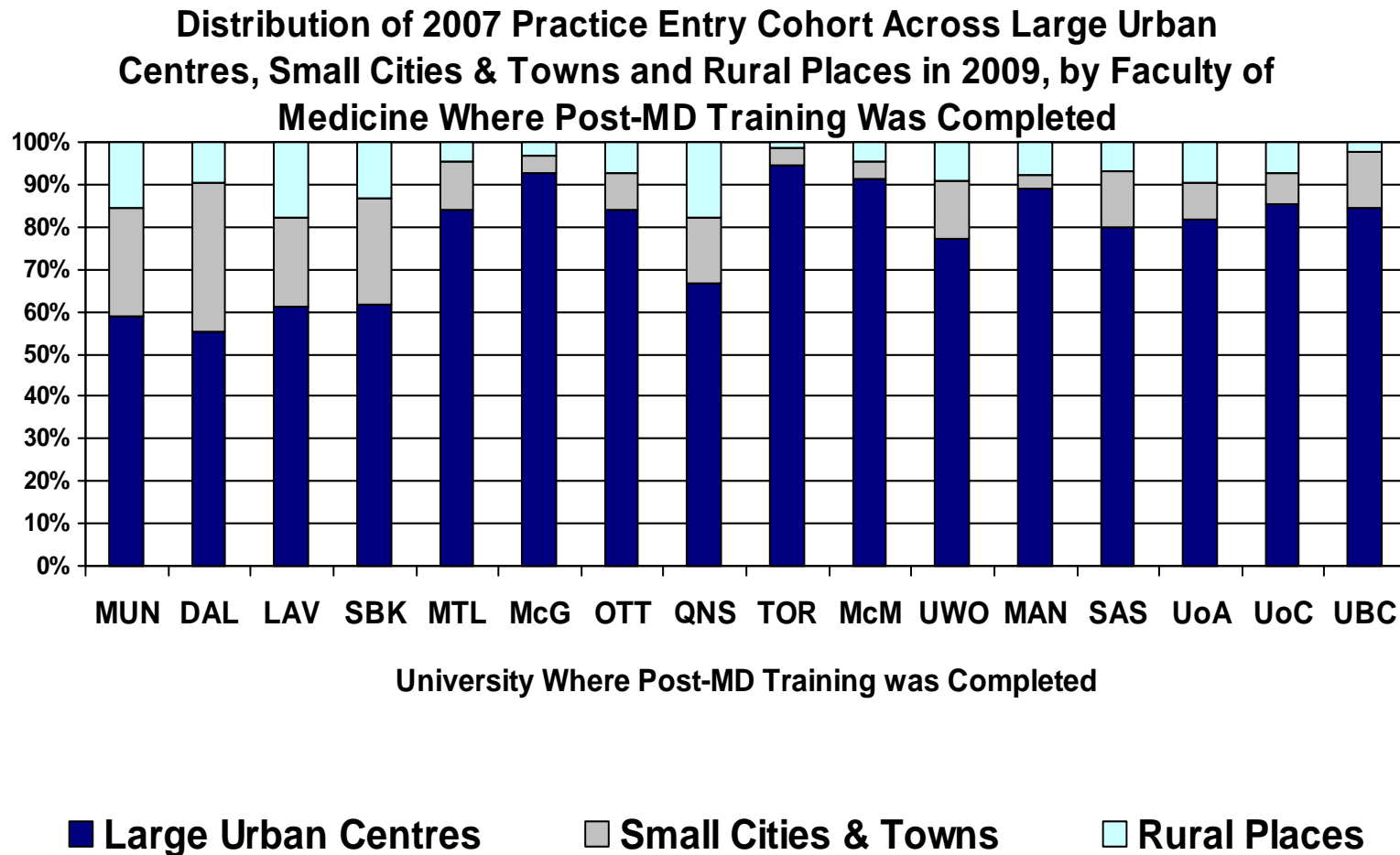
■ Outside Canada or Not Located

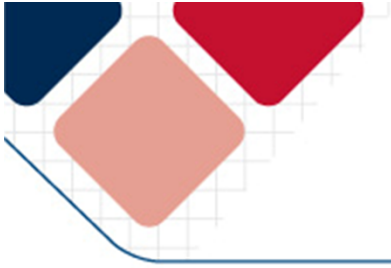
\*Includes Dalhousie post-MD graduates practising in PEI, Nova Scotia and New Brunswick. Source: CAPER, 2010.





# Where do our grads set up practice?





# CAPER Looking Forward



- Maintain products that are still needed
- Heighten awareness, connect with new users, market!
- Listen for direction re data delivery:
  - Topics and target audiences
  - Format (thick reports, brief bulletins, e-newsletter)
  - Web based tools (data dashboard, portal, tweet)
- Partner to increase outputs



# Questions or Suggestions?



**Steve Slade**  
Vice-President, Research and Analysis  
(CAPER/ORIS)

265 Carling Ave, Suite 800  
Ottawa, ON Canada  
K1S 2E1

 T 613-730-1204  
 F 613-730-1196

**Canadian Post-M.D.  
Education Registry**

sslade@caper.ca  
www.caper.ca

THANK YOU!